



CANOLFAN BRIFYSGOL  
**CAMBRIA**  
UNIVERSITY CENTRE

**MAKE YOUR**

**FUTURE**

**BRIGHTER**

**Cambria University  
Centre Guide  
2023/24**

**Gain a degree awarded by a top university**



# CONTENTS

Welcome to Cambria University Centre	03
World-class Facilities	04
Our University Partners	10
Student Support	12
Why Study With Us?	16
Qualifications Explained	17
Professional Development	18
Subject Areas	22



# WELCOME

**“A very warm welcome to Cambria. I am delighted that you are considering studying with us for your degree level qualification.**

“In partnership with some of the best universities in Wales and England we are able to offer you high quality, vocational degrees and higher level qualifications. Designed to meet current employment opportunities, our programmes will enhance your employability skills and career prospects.

“Cambria University Centre has a proven reputation for excellence. We combine inspirational teaching with outstanding student care to ensure that you get the best out of the investment you are making with us. So whatever your starting point, be assured we will give you the support you need to achieve a great outcome.

“I wish you every success in your studies.”



**Emma Hurst - Dean of Higher Education & Access to HE**

“I chose to continue my education with Cambria University Centre as it suited my lifestyle, allowing me to learn whilst also caring for my son.

“The team at the University Centre have been very helpful, supporting my dyslexia and ensuring I am on track to complete the course, ready for the next stage of my career to become a successful business manager.”



**Jodie Godfrey Applied Business Management student**



CANOLFAN BRIFYSGOL  
UNIVERSITY CENTRE

# WORLD-CLASS FACILITIES



# DEESIDE FACILITIES

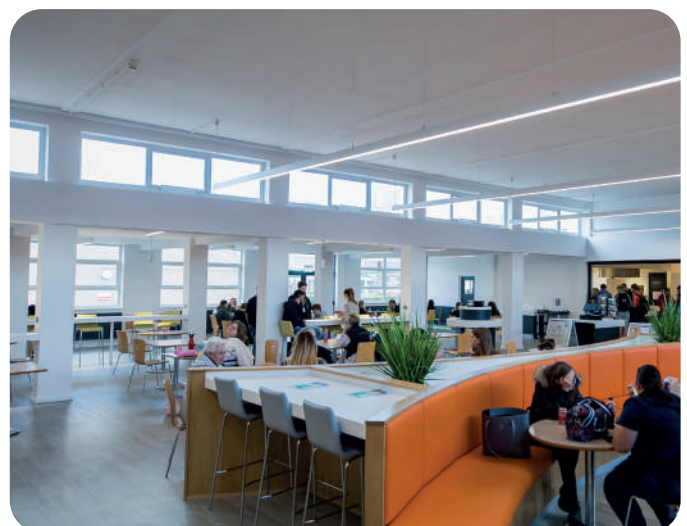
Scan here  
to find  
out more



Cambria Deeside has an excellent reputation and after extensive investment is home to Deeside Sixth and the University Centre.

The award-winning Engineering Centre of Excellence features world-class engineering facilities and the sports facilities are some of the best in the region.

Deeside had an £8.5m redevelopment which included a new state-of-the-art Engineering Technology Centre, Construction, Welding and Motor Vehicle workshops, which provide world-class education.





# YALE FACILITIES

Scan here  
to find  
out more



Cambria Yale has a long-standing reputation for excellence and is home to Yale Sixth, many vocational courses and apprenticeships. Yale features an impressive range of facilities with extensive resources and has recently undergone a £20m redevelopment.

Specialist teaching facilities include well-equipped science laboratories, computer suites and art studios. All students have access to the latest technology and are encouraged to use the university style library which has space over three floors to undertake private study.





# NORTHOP FACILITIES

Scan here  
to find  
out more



Our Northop site is set in 90 acres of breathtaking countryside. Located in Mold, Northop is easily accessed from across North and Mid Wales, as well as Cheshire, Wirral and Shropshire. At Northop student success is our priority. Our team of dedicated staff are here to inspire, motivate, challenge and help our students maximise their potential in the areas of our specialist industries.



# BERSHAM FACILITIES

Scan here  
to find  
out more



Cambria Bershham Road boasts some of the best facilities in the region. We have invested extensively to ensure we offer you the best equipment and technology to help with your studies.

Our site has recently had an £8.5m redevelopment which included a new state-of-the-art Engineering Technology Centre, Construction, Welding and Motor Vehicle workshops, which provide world-class education.





# LLYSFASI FACILITIES

Scan here  
to find  
out more



At Llysfasi we are industry leaders in land-based education. Our site sits in the beautiful North Wales countryside which lends itself as the perfect classroom for your land-based studies.



Located in Ruthin, Llysfasi is easily accessed from across North and Mid Wales, as well as Cheshire, Wirral and Shropshire.



Our partnerships with leading regional, national and global companies ensure our training and resources are outstanding and meet the needs of modern industry.

At Llysfasi, student success is our priority. Our team of dedicated staff are here to inspire, motivate, challenge and help our students maximise their potential, progressing to employment or Higher Education in the areas of our specialist industries.



# UNIVERSITY PARTNERS

## Aberystwyth University – 150 years of academic excellence

Located on the west coast of Wales, Aberystwyth University is your place to study, explore and grow. Since 1872, we've built a global reputation for teaching excellence and ground-breaking research.

Today, we welcome students from all over the world to our undergraduate, postgraduate, PGCE and MBA courses, and our friendly, outward-looking community.

In addition to being the Top University in the UK for Teaching Quality and Student Experience (Good University Guide, The Times and Sunday Times 2021), Aberystwyth is the Best University in England and Wales for student satisfaction (National Student Survey 2022). This is a special place. This is your place.



## LJMU Together – making a difference

Our city and our university stand tall together. We have grown from the confident, ambitious origins of Liverpool and have a shared history built on working hard, caring about supporting people and communities and being proud of who we are.

We have a distinct place in this lively city with our warm, friendly and open people. We share a spirit of adventure with a community striving to make a difference and put something back. Our staff, students and alumni are the beating heart of this university, with an impact that goes beyond academic, economic and social measures. It can be seen in our physical footprint around the city, our global connections and how often you will meet someone who has been transformed by a connection with our university and has helped transform the lives of others. Making a difference is what a university should be about. It is what we are about. It is who we are. It is Liverpool John Moores University.



## Swansea University has been ranked a UK Top 25 University by the Guardian University Guide 2022, and ranked top in Wales.

Swansea University achieved the highest award (Gold) for teaching excellence at UK universities in the Teaching Excellence Framework (TEF), and is ranked 12th for overall student satisfaction in the 2021 National Student Survey (NSS).

Swansea University spans two stunning campuses at each end of Swansea's waterfront. Singleton Park Campus is set in mature parkland and botanical gardens, overlooking Swansea Bay beach. To the east of the City is the Bay Campus, home to parts of the Faculty of Science and Engineering, and the Faculty of Humanities and Social Sciences which encompasses the School of Management. The Bay Campus provides a world-class environment for collaboration in research, learning and teaching, enterprise and innovation.





**All Cambria University Centre degree level courses are validated by some of the best universities in the UK. Our current partners are Aberystwyth University, Liverpool John Moores University, Swansea University, Bangor University and Wrexham Glyndŵr University.**

**Founded in 1884, Bangor University today is a thriving, forward-looking institution offering excellent opportunities. Around 11,000 students currently study with us and our teaching and research is grouped into nine academic Schools.**

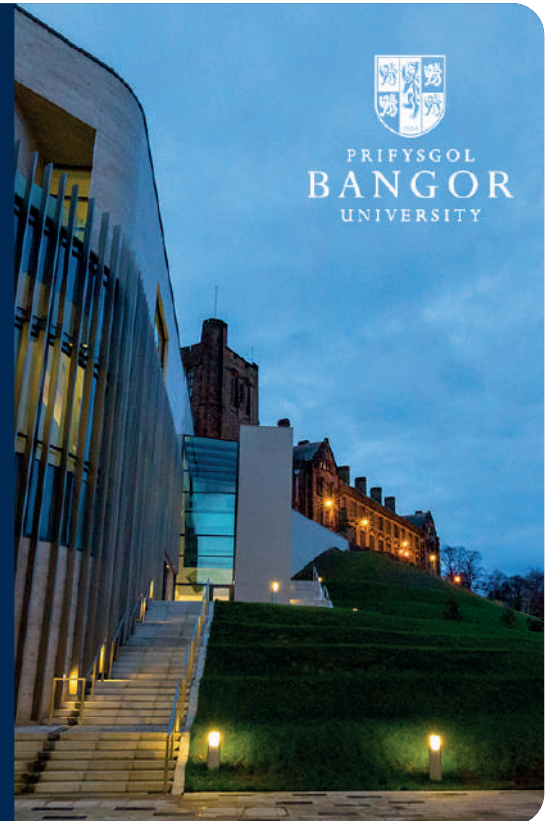
We pride ourselves on the quality of our teaching, and offer courses across the arts, humanities and sciences. Our staff have been making an impact, with environmental, social, economic, and cultural well-being research for more than 130 years.

Many of our students also choose to study with us because of the small and friendly nature of the University and town. Close to a UNESCO World Heritage site, with dramatic mountain and seascapes, Bangor's location is unrivalled.

Student life at Bangor University is vibrant and diverse. We have more than 200 Students' Union Clubs and Societies, covering a range of interests, activities and sports, and membership is free, so all our students can take advantage of the extra-curricular opportunities offered.

A high priority is placed on caring for and supporting our students. Our services include advice and guidance on careers and employability and matters from money and housing to disability support, counselling, and study skills.

Bangor is an inspiring place to live and learn – the ideal place to grow, develop talents and plan for a future career.



**Delivering education since 1887, Wrexham Glyndŵr University is a vibrant, friendly and inclusive learning community; focused on inspiring each student and placing them firmly at the heart of everything we do.**

First offering degrees in 1924 and becoming Glyndŵr University in 2008, the University is recognised and renowned for providing students with high levels of satisfaction, support and career opportunities, having risen 41 places in The Guardian University League Table 2022.

Our courses have an applied focus and offer students a rich, hands-on and supportive learning experience to further their ambitions and encourage their aspirations and passion to succeed.

The University is committed to driving academic excellence for people from all backgrounds, whilst providing a progressive environment that's designed to allow each and every student to reach their potential. Throughout their studies students can also access dedicated support that's relevant to them, such as a personal tutor service, careers advice and more.

Situated across North-East Wales, the main campus is based in Wrexham. With sites of the stunning North Wales countryside, the Northop campus is the hub for all our biology, environment and animal courses. Glyndŵr Innovations in St Asaph is our cutting-edge research centre that brings together academia and industry.



**BTEC Higher Nationals are internationally-recognised higher education qualifications developed by Pearson at level 4 and 5 that are equivalent to the first and second years of a university degree, providing progression to both university and employment.**

BTEC Higher Nationals are delivered at both universities and colleges in 60 countries around the world. They are an ideal choice for students seeking an affordable and relevant route to a degree or employment.



# STUDENT

# SUPPORT



**At Cambria University Centre, we have a dedicated Student Services team on hand at every site to make your time with us as easy and enjoyable as possible.**

## Personal Tutors

**As a higher level student you will have regular one-on-ones and group tutorials with your Personal Tutor.**

Your Personal Tutor will closely monitor your progress and support you through your studies, helping you to keep on track with your learning.

## Your Safety

**The safety and welfare of all our students is very important to us.**

We want you to feel safe, supported and cared for. Our staff will ensure you are safe during your studies and provide support with personal difficulties.

## Studying through the medium of Welsh

Cymraeg

**An increasing number of employers are looking for staff with bilingual skills and choosing to study through the medium of Welsh will provide you with an excellent foundation for your career.**

At Cambria University Centre you can submit your assignments in Welsh and receive bilingual notes, including terminology. There are also numerous opportunities for you to develop your Welsh language skills by following Welsh Language courses as part of your English medium programmes.

We work closely with the Coleg Cymraeg Cenedlaethol which means that you can gain access to a Welsh resource library, short courses, a glossary of terms and much more. We also have a Cambria Branch of the Coleg Cymraeg Cenedlaethol which organises all kinds of events and activities.

## Specialist Study Skills

We are committed to meeting your additional learning needs and we have a team of specialists to support you with specialist advice and guidance and support with your specific learning difficulties.



## Chaplaincy

**Cambria offers a Chaplaincy Service where you can talk confidently to one of the team.**

Chaplains are here for everyone: for people of all faiths, and none. We are here if you need someone to talk to, for whatever reason, to listen and support. We also have spaces where you can pray and reflect. To find out more please email [chaplaincy@cambria.ac.uk](mailto:chaplaincy@cambria.ac.uk)



## Childcare

**Cambria offers a fully equipped nursery at our Deeside site for children from 12 weeks to 5 years old.**

The nursery has excellent facilities and qualified, experienced staff to ensure children have the best possible start. If you have pre-school children you may be eligible to receive financial assistance towards the cost of childcare in one of our nurseries whilst you are a student here.



## Equality and Diversity

**We're proud to have a community that celebrates equality and diversity and ensures everyone is valued.**

As students and staff at Cambria University Centre we:

- Reflect the diverse communities we serve
- Respect and celebrate the different backgrounds and cultures of all learners, staff and visitors
- Have zero tolerance of bullying and harassment
- Treat all learners and staff equally and fairly
- Ensure learning services are accessible to all
- Challenge prejudice

## Student Voice

**Get involved with Student Voice and make a difference.**

Student Voice is how you get to have your say and change what happens. Become a Class Rep and represent your class to gain valuable skills that could potentially enhance your future career opportunities.

## Transport

We provide a network of buses to transport our Higher Education students to our sites daily. All buses drop off students on college premises or close by. If you travel by car or bicycle you will have access to our free parking and bike racks at most sites. You may be eligible to travel free of charge.



# FINANCIAL SUPPORT

Choosing to study at a higher level can be an investment in your future. We'll provide you with advice and guidance to help you with any financial concerns. Contact our Student Services Team by emailing [studentservices@cambria.ac.uk](mailto:studentservices@cambria.ac.uk).





# LIBRARY SERVICES

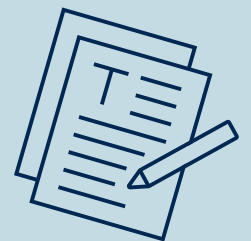
The Library and Academic Skills Department provide both group and individual support to enable learners to progress successfully through their programme. Information sessions include information sources, critical thinking and effective research. The importance of plagiarism and appropriate referencing is critical to your learning and these topics will be covered and reinforced during your studies. Access to both print and digital content is available via OpenAthens with full inductions in place providing guidance on search strategies and coverage of specialist resources and academic content.



At Cambria University Centre, technology will play a huge part in your studies and student life. All libraries have wifi for connecting your own device. We encourage and welcome students to bring their own device and we have charging points throughout the library. The library service is equipped with PCs and printing facilities accessed via your IT account and ID card. You will be using Google Suite to prepare assignments and access teaching resources - we will offer hints and tips to help you develop your information and IT skills.

## Important collections include:

- Taylor and Francis
- SAGE
- Springer
- Ebsco



**i** For information or advice  
email: [library@cambria](mailto:library@cambria).

Throughout the year you'll notice a range of activities and events to support good health and equality. Events may include guest speakers and activities, you are encouraged to join in, learn and share your experiences.

## Need advice or help with assignments or course work?

We offer advice and regular sessions on information skills topics including referencing your work correctly, exploring online material, finding relevant sources for assignments and making best use of Google Suite.

# WHY STUDY WITH US?

**INDIVIDUAL CARE AND ATTENTION**



**POSITIVE CULTURE OF LEARNING**

**TUTORS WITH INDUSTRIAL EXPERTISE**

**INSPIRATIONAL TEACHING**

**NATIONAL REPUTATION FOR EXCELLENCE**

**EXCELLENT VALUE FOR YOUR MONEY**



**STRONG LINKS WITH EMPLOYERS**

**HIGHLY SATISFIED STUDENTS**

**INDUSTRY STANDARD TEACHING RESOURCES**





# QUALIFICATIONS EXPLAINED

## Access to Higher Education (HE)

Our Level 3 Access to Higher Education courses prepare you to study for a degree and are designed for people who left school without the usual qualifications. You can enrol on an Access to HE course to help you return to learning and progress to degree level study.

## HNC and HND - Higher National Certificate/Diploma

A Higher National Certificate or Diploma is a vocational qualification that gives you the skills to put your knowledge into use for a particular job. Highly valued by employers, they offer an alternative route into Higher Education.

A HNC usually takes one year of full time study or two years of part time study and equates to completing your first year at university.

A HND usually takes two years of full time study, three years of part time study or one year as a 'top up' if you have already completed a HNC. A HND qualification can sometimes allow direct entry to a third year degree programme.

## Degrees

Upon completion of your HND or foundation degree you can top up your degree to Bachelor's level, equating to a third year of university. Our range of degree courses continues to expand and are widely supported by employers who contribute to the development of these courses.

## Professional Development

Professional development courses can help you to progress in the workplace and accelerate up the career ladder. A broad range of professional development routes have been established to support many ranges of career development and progression. Cambria offers professional development in many areas accredited by NEBOSH, IOSH, CIM, CIPD, AAT, Prince2 and ILM.

## Higher Apprenticeships

Higher Apprenticeships are a great alternative route to achieving higher level qualifications. They are a nationally accredited work-based programme designed to meet employer needs to build a well qualified workforce. Many Higher Apprenticeships include degree, HNC or foundation degree programmes, others include higher level professional courses such as AAT and ILM. They will allow you to learn at degree level with subsidised tuition fees and the opportunity to earn as you learn.

## Foundation Degrees

A foundation degree is a qualification which combines academic study with workplace learning. They are designed and developed with employers and are the equivalent to studying for the first two years at university.

## PCET - PGCE/ PCE Post Compulsory Education and Training

The Professional Graduate Certification in Education (PGCE) and the Professional Certificate in Education (PCE) are one or two year academic qualifications that are studied either after a degree (PGCE) or after a Level 3 qualification (PCE). The PGCE/PCEs offered by Cambria University Centre will give you the skills and knowledge to teach in the post compulsory education and training sector e.g further education, work-based learning and adult education.

## Degree Apprenticeships

Degree Apprenticeships combine working with studying part-time. Apprentices spend part of their time at Cambria University Centre and the rest with their employer. They can take three years to complete, depending on course level. Degree Apprenticeships are still quite new, so there are a limited number of vacancies. It's anticipated that the number of vacancies will grow over the next year or two.



aat



ilm



CIM  
The Chartered  
Institute of Marketing

CIPD  
Championing better  
work and working lives



AR GYFER BUSNES  
**CAMBRIA**  
FOR BUSINESS

# KEEP YOUR CAREER MOVING

## PROFESSIONAL DEVELOPMENT COURSES





# PROFESSIONAL DEVELOPMENT

## AAT (Association of Accounting Technicians)

The logo for the Association of Accounting Technicians (AAT), featuring the lowercase letters 'aat' in a green, sans-serif font inside a white circle.

**AAT are the UK's leading professional body offering skills-based accountancy and finance qualifications. Their qualifications are recognised and valued by employers as vocational and technical qualifications that prepare students for the world of work and for working specifically in accounting and finance roles.**

AAT's practical accounting and finance qualifications give you the skills that all employers need.

- Flexible courses make it easy to fit learning around your life
- Universally respected and internationally recognised
- Award-winning study materials, resources and support
- Employers trust AAT qualifications
- 140,000 members in more than 90 countries
- Cambria offers a wide range of courses throughout the year across different levels.

### Courses include:

- AAT Level 2 Foundation Certificate in Accounting
- AAT Level 3 Advanced Diploma in Accounting
- AAT Level 4 Professional Diploma in Accounting

## CIM (Chartered Institute of Marketing)

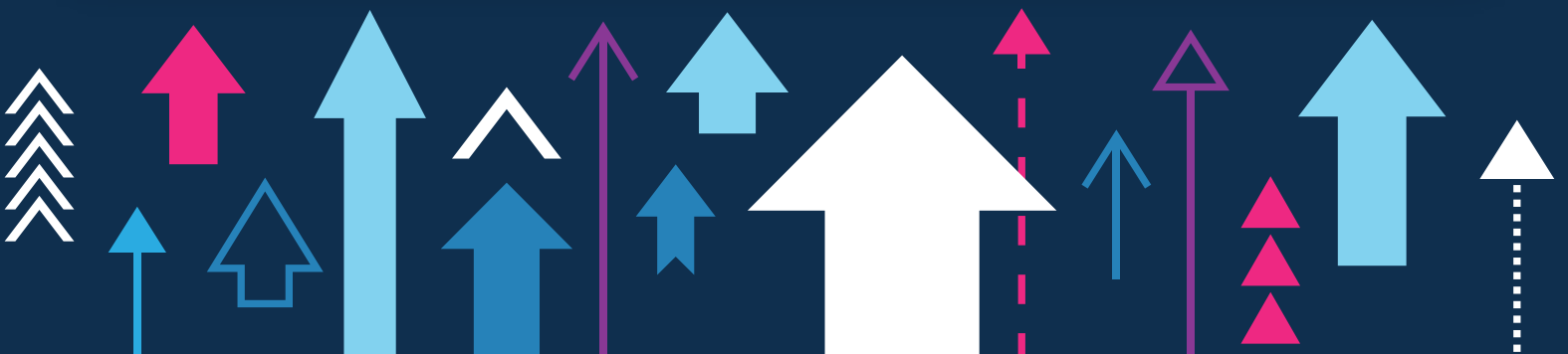
The logo for the Chartered Institute of Marketing (CIM), featuring the letters 'CIM' in a large, white, serif font above the text 'The Chartered Institute of Marketing' in a smaller, white, sans-serif font, all within a white circle.

**CIM qualifications are recognised by businesses all over the world and enable you to keep up with the latest trends in marketing and stay ahead in your field.**

Our range of professional qualifications are designed to support you, develop your knowledge and realise your full potential. Cambria has a strong reputation for delivering academic excellence on its CIM courses. The CIM courses are designed to help you progress as a marketing professional and advance your career. Cambria offers CIM courses throughout the year across a range of levels.

### Courses include:

- CIM Foundation Certificate in Professional Digital Marketing (Level 3)
- CIM Certificate in Professional Digital Marketing (Level 4)
- CIM Diploma in Professional Digital Marketing (Level 6)
- CIM Sustainable Marketing (Level 6)



## CIPD (Chartered Institute of Personnel Development)



**Our CIPD courses are taught by fully qualified tutors with extensive industry experience.**

Develop your career and effect change in your organisation:

- Boost your earning potential and career prospects.
- Choose a learning style suited to your lifestyle.
- Apply your learning at work straight away.
- Contribute to your organisation's sustainable success.

The Associate Diploma in People Management and the Associate Diploma in Organisational Learning and Development will qualify you for Associate member of the CIPD.

### Courses include:

- Level 3 Foundation Certificate in People Practice
- Level 5 Associate Diploma in People Management
- Level 5 Associate Diploma in Organisational Learning and Development

## ILM (Institute of Leadership and Management)



**ILM are the UK's top leadership and management qualification provider, specialising in leadership, management, coaching and mentoring, but also offering a wide range of sector and skill-specific qualifications.**

Our ILM qualifications are designed to develop the core knowledge and practical skills you will need to manage, motivate and inspire others, unlock staff potential, increase engagement and enable change.

Develop, deliver and design corporate programmes to move business forward. Cambria offers ILM courses throughout the year across a range of levels.

### Courses include:

- ILM Level 2 Award/Certificate in Leadership and Team Skills
- ILM Level 3 Award/Certificate in Leadership and Management
- ILM Level 4 Award/Certificate in Leadership and Management
- ILM Level 5 Award/Certificate in Leadership and Management
- ILM Level 2 Award in Effective Mentoring Skills
- ILM Level 3 Award/Certificate in Effective Coaching
- ILM Level 3 Award/Certificate in Effective Mentoring
- ILM Level 5 Certificate in Effective Coaching and Mentoring
- ILM Level 4 Diploma in the Principles of Leadership & Management
- ILM Level 5 Diploma in the Principles of Leadership & Management
- ILM Level 6 Diploma in Management

**Regular bite size courses are delivered across a number of subject areas to provide you with the tools you need to help you manage effectively.**





# PRINCE2®



**PRINCE2® is a structured project management method that can be tailored to any size project. Developed by the UK government and based on best practise, it is an internationally accepted benchmark for project managers and certification is a strong addition to any professionals CV.**

We run PRINCE2® Foundation as a standalone course or in conjunction with the PRINCE2® Practitioner. The Foundation course is three days long. The Practitioner course is two days in duration.

An online exam voucher (included in price) is generated for each exam, giving learners 1 year from the date of the course in which to complete the exam in their own time.

PRINCE2® is a registered trademark of AXELOS Limited, used under permission of AXELOS Limited. All rights reserved. The Swirl logo™ is a trade mark of AXELOS Limited, used under permission of AXELOS Limited. All rights reserved.



# NEBOSH & IOSH (National Examination Board in Occupational Safety and Health) (Institution of Occupational Safety and Health)



**Cambria offers accredited courses from the National Examination Board in Occupational Safety and Health (NEBOSH). The course is for those who want to develop a career in health and safety; fire safety; construction safety; health and well-being and environmental management.**

The NEBOSH Diploma qualification has honours degree status. Most Universities will allow a NEBOSH Diploma graduate onto a Masters health and safety qualification. It is made up of four units.

Unit A focuses on the management of health and safety; Unit B focuses on occupational health hazards; Unit C focuses on workplace and work equipment hazards; and the Unit D is a work-based assignment focusing on health and safety management and leadership.

To become a health and safety manager, most employers would request that prospective employees possess the NEBOSH Diploma as well as be a Chartered Member of IOSH.

## Courses include:

- Certificate in Environmental Management (International Certificate Level 3)
- National General Certificate in Occupational Health and Safety (Level 3)
- National Certificate in Construction Health and Safety (Level 3)
- National Certificate in Fire Safety and Risk Management (Level 3)
- National Diploma in Occupational Health and Safety (Level 6)
- Working Safely
- Managing Safely
- Managing Health & Wellbeing in the Workplace
- NEBOSH National Diploma in Environmental Management (Level 6)
- NEBOSH Working with Wellbeing
- IOSH - Managing safely
- IOSH - Working Safely



# **SUBJECT AREAS**

- **Access to Higher Education**
- **Advanced Manufacturing Engineering (Electrical/Mechanical)**
- **Aeronautical and Manufacturing Engineering**
- **Animal Management**
- **Applied Business Management**
- **Childhood Studies**
- **Computing**
- **Construction and the Built Environment (Civil Engineering & Construction)**
- **Creative Media Production**
- **Criminal Justice**
- **Electrical and Electronic Technology**
- **Engineering (Manufacturing Engineering)**
- **Forestry and Woodland Management**
- **Health & Social Care**
- **Mechanical Technology**
- **Teaching (PCE-PCET / PGCE-PCET)**
- **Tourism and Hospitality**
- **Sound Engineering and Music Production**
- **Sports Coaching**



Professional

→ Outside temp

→ Medical Storage

→





# ACCESS TO HIGHER EDUCATION



## LENGTH:

1 year full time

This course runs around school times, starting at 9.15am and finishing at 2.30pm.

\*There is also an option to do Access to Health Care via blended learning. This requires college attendance 1 day a week 9.15am - 6.30pm with the remainder of the course being delivered online.

---

**LOCATION:** Deeside or Yale

---

At Cambria our Level 3 Access to Higher Education (HE) programmes are FREE OF CHARGE. They prepare you to study for a degree and are designed for people who left school without the usual qualifications, such as A Levels.

The courses offer a one year route to degree level studies leading to a variety of careers and are open to students with substantial life experiences gained since leaving school. Many of our Access to HE students have gone on to succeed at university and pursued new careers that they had never thought possible.

You can enrol on Access to HE courses to help you return to learning and progress to degree level study.

Some vocational degree courses require specific GCSEs as well as the Access to HE Diploma, there is the opportunity to achieve these alongside your main study.

## COURSES

- Access to HE Health Care - Deeside or Yale
- Access to Landbased/Biosciences - Northop
- Access to HE Humanities and Social Sciences - Yale
- Access to Policing - Deeside
- Blended Access to HE Health Care - Deeside or Yale - this is a combination of learning from home and attending college one day a week.
- Blended Access to HE Engineering - Deeside - this is a combination of learning from home and attending college on a part time basis

## CAREER OPTIONS

- Further study at university at degree level
- Health and Social Care
- Youth and Community Work
- Nursing
- Teaching
- Humanities Business
- Social Work
- Criminal Psychology

**For detailed course information including start dates, please visit [www.cambria.ac.uk](http://www.cambria.ac.uk)**





# RORY THOMAS

**Course:** Access to Healthcare  
**Employer:** Welsh Ambulance Service  
**Role:** Paramedic

“I found the course online and decided to apply because I knew it would provide me with everything I needed to go onto university.

“The site was extremely well equipped for all my learning needs, and its staff were always on hand to help with anything I needed. During my time there I didn’t feel out of place as a mature student.

“From the moment I started on the course the support I received was second to none. The tutors at Cambria University Centre were always there whenever I needed any assistance or guidance through a piece of work, or for my university applications. This carried on even after I completed the course and moved on.”







# FdA CREATIVE MEDIA PRODUCTION

COURSE CODE: LP52302



## LENGTH:

2 years, full time

Students on this course will be required to undertake periods of self study in addition to taught hours.

## ENTRY REQUIREMENTS:

- 45 UCAS points
- Extended Diploma subjects/grades required: DMM in a relevant subject required if no other Level 3 qualification has been taken
- GCSE Maths and English Language at C grade/grade 4 or above. Plus an interview or presentation of portfolio may be required
- Access to HE Diploma with at least 9 Distinctions and 36 Merits or any other combination that equates to 104 UCAS tariff points in a relevant subject
- Mature students with GCSE grade C or above in English Language and Maths or equivalent, but lacking traditional Level 3 qualifications will be considered on the basis of relevant experience and an appropriate portfolio of work.

**LOCATION:** Deeside

## MODULES:

### Year 1

- Digital Media Tools
- Production Practice
- Themes of Contemporary Media
- Introduction to the Media Industry
- Understanding Narrative
- Digital Production Practice

### Year 2

- Multiplatform Production
- Compositing and Post Production
- Drama
- Applying for Placements & Jobs
- Digital Media Ethics, Compliance and Copyright
- Digital Media Cultures
- TV Studio Production

## WHAT WILL I STUDY?

This two year Foundation Degree course will prepare you for a career in the media as a flexible practitioner fully capable of meeting the challenges of the constantly evolving media industries. Using a combination of practical experiences and theoretical learning, the course will build your experience of media production, and deepen your understanding and skills in media tools and techniques, professional practice, creativity, narrative skills, digital media technology and contemporary media theory.

As well as making media products you will study academic modules which prepare you with a range of transferable skills vital for further study and valued in many career paths.

## HOW AM I ASSESSED?

Assessment varies depending on the modules assessed, but will usually include a combination of exams and coursework which employ a range of assessment methods, including: written work (essays), presentations (group/individual), practical assessments (individual and team projects), producing web content, video productions both factual and fiction, studio and location workshops and interactive products and portfolios including e-portfolios.

## WHAT'S NEXT?

When you successfully complete the course, you may wish to progress to the BA (Hons) Media Production at Liverpool John Moores University or directly into employment.

Students are eligible to progress to the final year of a BA honours, and will be supported by college and university staff in making their decision.

**For detailed course information including start dates and costs, please visit [www.cambria.ac.uk](http://www.cambria.ac.uk)**

# FdA CRIMINAL JUSTICE

COURSE CODE: LP01481



## LENGTH:

2 years, Full Time.  
Awarded by LJMU, full time over two days 09:00 – 16:00.

## ENTRY REQUIREMENTS:

- 72 UCAS points

Applications are welcomed from mature and non-standard applicants, who will be considered on an individual basis. These applicants may be required to submit an essay and/or attend an interview, and should demonstrate potential and motivation and/or have relevant experience.

International applicants will be considered in line with UK qualifications.

**LOCATION:** Yale

## MODULES:

### Year 1:

- Crime Law and Criminalisation
- History of Crime and Criminal Justice
- Criminal Justice System
- Criminological Theory
- Media, Public and Criminal Justice
- Personal and academic development in Criminal Justice

### Year 2:

- Injustices in a 'just' System
- Decision Making in Criminal Justice
- Professional Development in Criminal Justice
- An Introduction to Penology
- Criminal Justice Policy, Practice and the Evidence Base
- Criminal Justice Research

## WHAT WILL I STUDY?

Our aim is to provide our students with critical insight into the theory, policy and practices of our criminal justice system. We are committed to providing contemporary, relevant and value adding education which is grounded in research informed teaching, and delivered by subject experts who bring cutting edge knowledge into the classroom. We seek to develop students' vocational skills and knowledge, equipping them with the attributes that employers value.

## HOW AM I ASSESSED?

Students will be assessed using a variety of methods including formal essay writing, reflective portfolio, case study. Examinations including unseen and online, a book review, presentations to include both individual and group.

## WHAT'S NEXT?

Students who wish to progress may do so by progressing to the top-up year to gain a degree in Criminal Justice at Liverpool John Moores University.

## CAREER OPTIONS

- UK Border Force
- Probation Service
- Prison Service
- Private Sector Investigative Services
- National Security (MI5/MI6)
- Youth Offending Teams

This qualification gives learners an industry relevant qualification, it does not guarantee a job in the agencies mentioned.

**For detailed course information including start dates and costs, please visit [www.cambria.ac.uk](http://www.cambria.ac.uk)**





# OWEN WARD

Current Student

“I decided to complete a foundation degree because I hope to complete a degree, in order to become a Paralegal.

“I chose Cambria University Centre because of the location, facilities and the great reports that I have heard.

“The support I have received, especially being out of academia for so long has been fantastic, all the way through from enrollment to the continued support of my tutors.”





# FdA HEALTH AND SOCIAL CARE

COURSE CODE: LP01198



## LENGTH:

2 years, full time

Students on this course will be required to undertake periods of self study, additional to taught hours.

## ENTRY REQUIREMENTS:

Please note: We do accept and consider applicants who come with vocational experience, but without the required qualifications. We accept each application individually and on a case-by-case basis.

We accept students with a wide range of qualifications, skills and backgrounds.

We welcome applications from mature applicants.

Offers are tariff based, 80 - 96 tariff points from a Level 3 qualification\* e.g.:

- A Levels
- BTEC National/Extended Diploma and Cambridge Technical Extended Diploma: MMP - MMM
- International Baccalaureate Diploma
- Access to Higher Education Diploma
- Irish Leaving Certificate: 80 - 96 points from a minimum of 4 Higher Subjects
- NCFE CACHE Level 3 Extended Diploma
- Skills Challenge Certificate

International candidates: school leaving qualifications and college diplomas are accepted from countries worldwide (subject to minimum English Language requirements).

All students need to have good basic skills, IT and communication skills.

A Disclosure and Barring Service (DBS) Enhanced Police Check is required for this programme. The Student Services Team will conduct DBS checks with students prior to the programme start date.

**LOCATION:** Yale

## MODULES:

### Year 1:

- Health and Welfare Issues in Contemporary Society: Relating Theory to Practice (20 credit)
- Fundamentals of Sociology (20 credit)
- Research and Study Skills (20 credit)
- Health and Society (20 credit)
- Behaviour and Health (20 credit)
- Working with Vulnerable Populations (20 credit)

### Year 2:

- Comparative Health and Welfare (20 credit)
- Research Methods (20 credit)
- Ageing and Well-being in Society (20 credit)
- Interpreting Health and Social Care: A Work-based Perspective (20 credit)
- Sociology of Health (20 credit)
- Social Work Perspectives (20 credit)

## WHAT WILL I STUDY?

The Foundation Degree in Health and Social Care (developed and awarded by Bangor University) will provide you with an in-depth understanding of the health and social care policies, theory and practice and you will gain the skills needed to be able to work effectively in a multidisciplinary environment. In line with today's fast-changing care sector, the emphasis during this course will be on the social experiences of health and care and the delivery and management of services.

## HOW AM I ASSESSED?

You will be exposed to a variety of assessment methods designed to ensure that the content, outcomes and level of the modules are measured in a fair and transparent manner. Assessment methods will include essays, reports, presentations, portfolios and exams (open book).



## WORK PLACEMENT

A placement is required for two modules throughout the 2 year programme (students will undertake a work-based / placement module in both years).

## WHAT'S NEXT?

Students are offered direct access to the final year (Level 6) of the BA Health and Social Care programme at Bangor University.

## CAREER OPTIONS

Health and Social Care is a very diverse field that will open up many opportunities for your future. The Foundation Degree in Health and Social Care will prepare graduates for a range of exciting roles in the wider health and social care sectors: including the public, private and third sectors; such as the NHS, local councils, social care organisations and a variety of third sector organisations. As such, there will be a strong employability focus at all levels of the course. Students will gain valuable knowledge, skills and experience during their learning of the modules, and the programme team will invite health and social care practitioners and other relevant personnel, such as managers, service users and carers, to contribute to course delivery. Completion of this course can also lead to a further degree such as nursing, midwifery, occupational therapy, social work, or teaching, for example.

**For detailed course information including start dates and costs, please visit [www.cambria.ac.uk](http://www.cambria.ac.uk)**



# GEORGE GREENWOOD

**Course:** FdA Health and Social Care

**Employer:** LifeLongLearning4Living

**Role:** Deputy Manager

“Cambria offered all the resources and support that you would expect of the University setting. The wealth of access to materials both in physical and online form was incredible and really benefited the development of my assignments.

“My tutors were phenomenal, they made the content of the modules engaging and the lectures enjoyable. My son was born during the course, and I struggled with postnatal support, I had an incredibly difficult time and the College and Tutors really supported me through this period. This is just one example of the plethora of support I received during my time at Cambria.

“Completing the FDA has supported my professional development and career goals. I have felt increasingly confident that I can step up from a Deputy Managers position to a Manager’s role. It also allowed me to complete a BSc (Hons) Mental Health and Wellbeing, and I am now starting an MSc Health, Mental Health and Wellbeing.”



# FdA TOURISM AND HOSPITALITY MANAGEMENT

COURSE CODE: LP01477



## LENGTH:

2 years, full time, awarded by LJMU

Students on this course will be required to undertake periods of self study and work placement additional to taught hours.

## ENTRY REQUIREMENTS:

Conventional candidates should normally be able to demonstrate one of the following qualifications:

- A minimum of 88 points at GCE A Level or equivalent
- An appropriate BTEC Diploma – Extended Diploma: MMP
- An appropriate Access to Higher Education course 'Diploma of Achievement'
- A pass grade on a relevant level 3 vocational qualification

The College and University encourages wider access and participation in Higher Education and applications are encouraged from those who may not have the necessary points/qualifications. The Programme Leader will discuss the requirement of the course and assess prospective students for their suitability based on a combination of qualifications, experience and motivation.

Mature students (21 years of age or over) without evidence of the above qualifications but with appropriate experience, will be required to demonstrate enthusiasm and aptitude for higher level study.

**LOCATION:** Yale

## MODULES:

### Level 4:

- Introduction to International Tourism
- Academic Skills and Digital Literacy
- Food & Beverage Management in Hospitality
- Managing Service Experiences
- Welsh Tourism
- Marketing for Tourism

### Level 5:

- Employability Skills
- Event Planning
- Researching in Tourism & Hospitality
- Responsible Tourism & Sustainability
- Event Production
- Working in Tourism & Hospitality

## WHAT WILL I STUDY?

This programme will be delivered through a combination of online and face to face sessions to suit your individual needs, subject to us being able to work within the Welsh Government guidance and legislation to ensure the safety of you and our staff. We will also continue to support those with additional learning needs remotely. Please note that where work placements are not able to be fulfilled for safety reasons we will adapt modules to include work related projects in a way that will still develop your work based skills.

## HOW AM I ASSESSED?

Students will be assessed using a variety of methods including essays, practical observations, portfolios of evidence, research projects and presentations (both individual and group).

## WHAT'S NEXT?

On successful completion of the FdA in Tourism and Hospitality you can go onto further study on the top up year on the BA(Hons) International Tourism Management degree at Liverpool John Moores University or a top up on a related programme.

## CAREER OPTIONS

This course will enable progression into entry management positions, with roles such as:

- Hotel management
- Travel consultancy
- Restaurant management
- Events management

**For detailed course information including start dates and costs, please visit [www.cambria.ac.uk](http://www.cambria.ac.uk)**





# CHARLOTTE LEE

“I would like to own my establishment and studying at Cambria University Centre has given me a real insight into what is needed and what can be achieved when you set your mind to something.

“Returning to education after 20 years was daunting, but the rewards of doing the course and seeing the improvements I made each time I submitted an assignment made it all worthwhile.

“Having such a small class made the experience better and having a great tutor and great class friends made the experience the best I could have hoped for.”



# FdA / BA (Hons) CHILDHOOD STUDIES

FdA COURSE CODE: LP01116 | BA COURSE CODE: LP51332



1872 PRIFYSGOL  
ABERYSTWYTH  
UNIVERSITY

1872  
150  
2022

## LENGTH:

FdA Childhood Studies (2 years)

BA Childhood Studies (3 years)

## ENTRY REQUIREMENTS:

- 3 A Levels grade C or equivalent
- 96 UCAS points (2017 UCAS Tariff)

Applicants who come from significant vocational experience but without the UCAS point requirement will be considered on a case by case basis.

A Disclosure and Barring Service (DBS) Enhanced Police check is required for this course.

**LOCATION:** Deeside

## WHAT WILL I STUDY?

In choosing Cambria's Foundation Degree or Degree in Childhood Studies (developed and accredited by Aberystwyth University) you will study a broad spectrum of childhood development topics that include the sociological, psychological and educational factors that influence the development of children. You will be taught by enthusiastic staff and cover a range of practical, theoretical, and professional disciplines that employers demand. Your skills and abilities will be enhanced with regular exposure to team-work, communication skills, interpersonal skills, and time and work management opportunities.

The Childhood Studies programmes will equip you with the skills and expertise necessary for work in a range of child-related professions. It will push you to improve your legislative knowledge, your social awareness, your ability to work with others and your academic excellence. These skills will fit you for any graduate workplace which values thorough research, critical analysis, interpersonal abilities, and fluent and confident communication and reporting.

The Childhood Studies programmes will draw you to the disciplines of psychology, sociology and education. As you study, you will consider the theoretical principles of the subject and evaluate them in the light of social history, contemporary legislation and the latest best practice. You will explore the social, emotional and cognitive development of children, and scrutinise the methods used for measuring child development.

For the Children's Learning and Development module, in addition to lectures, each student will make visits to a local playgroup or nursery to experience and observe children at play. This practical visit is an important element within the course, illustrating many of the aspects covered in the course.

## HOW AM I ASSESSED?

The course material will be delivered through a combination of lectures, seminars, interactive tutorials, visiting speakers and workshops. Audio recordings of lectures are made so that you can listen again at exam time, or catch up if you are ill. Visiting speakers add to the variety of presentation.

Modules are assessed through examinations and/or essays, which may include, projects, bibliographic exercises, reflective diaries, posters, and presentations. Examinations do not account for more than 50% of the marks in any modules. A portfolio based on observation is also required.

In the third year, your dissertation will allow you to conduct your own research project into a topic of your own choice, under the guidance of a member of staff. It will require library-based study, a critical interpretation of sources, and a small-scale empirical investigation.

Where possible, assignments are marked electronically and you will be given feedback and pointers for improvement for every assignment and examination.

Student support is available from your own Personal Tutor and the module tutors throughout your studies.

## WORK PLACEMENT

Placement is a required element in Years 1 and 2 as your practice will be linked to module content and assessment.





## WHAT'S NEXT?

Successful completion of Years 1 and 2 will enable students to achieve a Foundation Degree. Completion of the Foundation Degree will allow progression onto the BA Childhood Studies in Year 3.

## CAREER OPTIONS

Data demonstrates that studying Childhood Studies at Cambria will provide opportunities to develop a range of skills sought by employers in a range of relevant sectors. In recent years, students studying the Childhood Studies Degree at Aberystwyth University have confidently moved into careers within the field of teaching and education (including SEN), social care, nursing, speech therapy, social work, child welfare, play therapy, the leisure industry, child law, and childhood research.

We will actively support our graduates to move on to study at primary PGCE level or to take a Masters, and the close partnership with Aberystwyth University means that those students opting to go on to higher level study can find pathways via Aberystwyth University.

The wealth of core childhood-specific skills and other, more generic skills that you will develop during your degree can be easily transferred into almost any graduate or professional employment situation. The department additionally encourages students to seek work placements activity and focused careers support to help source the right work experience opportunity to start profiling your career direction. You will be able to show a comprehensive understanding of major learning theories; respond critically to contemporary arguments; reflect upon your own practice as a working professional; evaluate the aims and impact of social policies; and consider the subject from multiple positions, such as from gender and cross-cultural perspectives.

## BURSARIES

For September 2023 starts we are offering a £1,000 bursary\* for all current Coleg Cambria students who study this degree course.

\* Bursaries will be awarded in two instalments, to students who have paid their fees and will be subject to conditions.

**For detailed course information including start dates and costs, please visit [www.cambria.ac.uk](http://www.cambria.ac.uk)**

# CHARLEY MITCHELL

**Course:** FdA Childhood Studies

**Employer:** I'm in the process of setting up my own business using my qualifications (Happy Place - Social Arts and Crafts Centre)

"I decided to study at Cambria University Centre, because as a Mum of two it was much more efficient for me instead of a big university site.

"I enjoyed the smaller setting as it was less busy and felt more personal with the tutor and other students. I felt that the smaller class sizes meant that the support was very good and tutors had more time to talk with us and discuss things, which helped with my learning.

"The course gave me a great insight into education, and it also gave me more confidence in my personal knowledge of what I was studying."

# FdEng / BEng ADVANCED MANUFACTURING ENGINEERING (ELECTRICAL / MECHANICAL)

Can be studied as a Higher or Degree Apprenticeship

FdEng COURSE CODE: LP51320 | BEng COURSE CODE: LP51321



## LENGTH:

2 years, part time Foundation Degree or Higher Apprenticeship  
3 years, part time Bachelor Honours Degree

Students on this course will be required to undertake periods of self study and some time at Swansea University in addition to taught hours.

## ENTRY REQUIREMENTS:

- Fd Year 1 – A Levels of grade BBB including Maths and Physics. There is no requirement on the third A Level, but one of Chemistry, Design, IT/ Computing, Further Maths or Business/Economics is preferred or a relevant BTEC qualification with grades of D\*D\*D\* with a Distinction in the Further Maths Module
- Fd Year 2- Relevant HNC qualification (120 credits)
- BEng- Relevant Fd (240 credits) or a Level 5 Diploma
- In addition to this, all applicants must have GCSE English Language and GCSE Maths or Numeracy at grade C or above.

Any assessment of prior learning (such as professional development awards or employment-based awards) which is at a Higher Education level but not awarded HE credits will be considered on a case by case basis by the Swansea University and Cambria Admissions Teams.

**LOCATION:** Deeside

## MODULES:

### Year 1:

- Engineering Analysis 1
- Business, Management and Quality
- Electrical and Electronic Principles
- Engineering Manufacture
- Engineering Science
- Work-based Learning
- Professional Engineering Practice

### Year 2:

- Engineering Analysis 2
- Advanced Manufacture, CAM & NDT
- Stress Analysis and Dynamics
- Industrial Project
- Electrical Circuits, Control and Instrumentation
- Computer Aided Engineering
- Engineering Materials

### Year 3:

- Research Project
- Engineering Management
- Advanced Engineering Design
- Manufacturing Optimisation and Automation
- Systems Engineering
- Advanced Engineering Materials
- Digital Manufacturing
- Design for Reliability
- Industry 4.0
- Power Systems (Electrical Pathway Only)
- Finite Element Analysis (Mechanical Pathway Only)

## WHAT WILL I STUDY?

You will study a broad spectrum of advanced manufacturing topics developed in line with employer requirements. This programme is for students and higher apprentices who want to progress within and further improve knowledge in advanced manufacturing engineering.

Key features to studying this degree at Cambria:

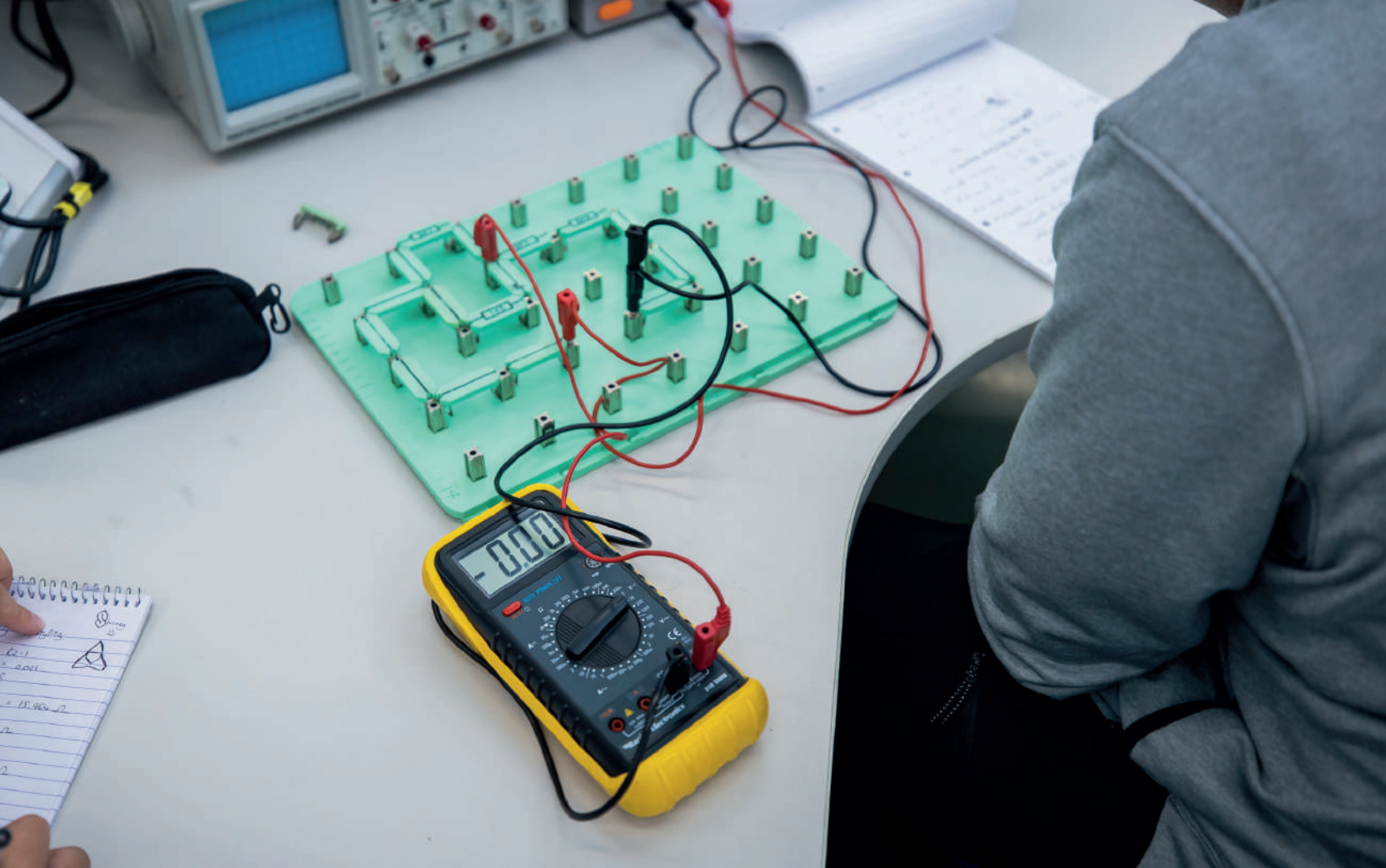
- All modules are taught by Cambria or Swansea University Engineering tutors who have a breadth of industrial and academic knowledge
- Outstanding connections with many businesses and business leaders
- World-class facilities and resources
- A mix of academic studies which links to practical vocational applications in all subject modules
- Excellent student support, with all students having a Personal Tutor
- Experienced provider of apprenticeship routes

## HOW AM I ASSESSED?

The programme will be delivered through a combination of lectures, seminars, interactive tutorials, visiting speakers, workshops and 'Flipped Learning' techniques. Most modules are assessed through examinations and assignments. You will be given feedback and pointers for improvement for every assignment and examination. Work placements are required for the work-based modules. Approximately 1 week per year will be spent at the university campus in Swansea.

**For detailed course information including start dates and costs, please visit [www.cambria.ac.uk](http://www.cambria.ac.uk)**





# JAMES EDWARDS

**Course:** HNC Mechanical Engineering and BEng Advanced Manufacturing (Mechanical) Engineering

**Employer:** Magellan Aerospace

**Role:** Configuration engineer

“I was employed before starting the course but it has helped me gain further knowledge and skills that I can use in my role.

“During my time at Cambria University Centre, the lecturers were very supportive and I found they always had time for people even when they were busy. The facilities definitely made it easier and enjoyable to understand new subjects.

“I’ve told plenty of people over the years that doing a higher education course at Cambria University Centre is 100% worth it. The tutors are nice, the facility is great, and if you’re working at the same time, it’s perfect because it’s local.”

# FdEng / BEng AERONAUTICAL AND MANUFACTURING ENGINEERING



Accredited by the  
Royal Aeronautical  
Society

Can be studied as a Higher or Degree Apprenticeship

FdEng COURSE CODE: LP51319 | BEng COURSE CODE: LP00874



## LENGTH:

2 years, part time Foundation Degree or Higher Apprenticeship  
3 years, part time Bachelor Honours Degree

Students on this course will be required to undertake periods of self study and some time at Swansea University in addition to taught hours.

## ENTRY REQUIREMENTS:

- Fd Year 1 – A Levels of grade BBB including Maths and Physics. There is no requirement on the third A Level, but one of Chemistry, Design, IT/Computing, Further Maths or Business/Economics is preferred or a relevant BTEC qualification with grades of D\*D\*D\* with a Distinction in the Further Maths Module
- Fd Year 2- Relevant HNC qualification (120 credits)
- BEng- Relevant Fd (240 credits) or a Level 5 Diploma
- In addition to this, all applicants must have GCSE English Language and GCSE Maths or Numeracy at grade C or above.

Any assessment of prior learning (such as professional development awards or employment-based awards) which is at a Higher Education level but not awarded HE credits will be considered on a case by case basis by the Swansea University and Cambria Admissions Teams.

**LOCATION:** Deeside

## MODULES:

### Year 1:

- Work-based Learning
- Engineering Analysis 1
- Business, Management and Quality
- Professional Engineering Practice
- Engineering Science
- Engineering Manufacture
- Electrical and Electronic Principles

### Year 2:

- Industrial Project
- Engineering Analysis 2
- Flight Dynamics
- Advanced Manufacture, CAM and NDT
- Stress Analysis and Dynamics
- Computer Aided Engineering
- Engineering Materials

### Year 3:

- Research Project
- Engineering Management
- Advanced Engineering Design
- Aerodynamics
- Finite Element Analysis
- Air Frame Structures
- Manufacturing Optimisation and Automation
- Systems Engineering
- Advanced Engineering Materials
- Digital Engineering

## WHAT WILL I STUDY?

In choosing Cambria's Foundation Degree in Aeronautical and Manufacturing Engineering (accredited by Swansea University) you will study a broad spectrum of advanced manufacturing topics developed in line with employer requirements. This programme is designed for students and higher apprentices who want to progress within and further improve knowledge in aeronautical manufacturing engineering.

Key features to studying this degree at Cambria:

- All modules are taught by Cambria or Swansea University Engineering tutors who have a breadth of industrial and academic knowledge.
- Outstanding connections with many businesses and business leaders throughout North Wales, with guest business speakers, presentations and opportunities to network.
- World-class facilities and resources in the new Engineering University Centre at the Deeside site.
- A mix of academic studies which links to practical vocational applications in all subject modules.
- Excellent student support, with all students having a personal tutor and access to one to one support.
- Experienced provider of apprenticeship routes.

## HOW AM I ASSESSED?

The programme will be delivered through a combination of lectures, seminars, interactive tutorials, visiting speakers, workshops and 'Flipped Learning' techniques. Most modules are assessed through examinations and assignments. You will be given feedback and pointers for improvement for every assignment and examination.

Work placements are required for the work-based modules. Approximately 1 week per year will be spent at the university campus in Swansea.

**For detailed course information including start dates and costs, please visit [www.cambria.ac.uk](http://www.cambria.ac.uk)**





# JORDAN BROOM

**Course:** Bachelor's degree programme in Aeronautical and Manufacturing Engineering

**Employer:** Airbus

“I am currently studying a Bachelor's degree programme in Aeronautical and Manufacturing Engineering. The programme is a funded degree for apprentices and is run with Swansea University. I'm in my 3rd and final year.

“When deciding my post 18 options after completing A-levels at a Sixth-form, I was interested in the experience that an apprenticeship could provide. However I also recognised the value a degree has, especially as a young engineer with no prior work experience. As such I chose to complete a degree apprenticeship with Airbus, completing the degree with Coleg Cambria and Swansea in the University Centre.

“I personally enjoy the access to facilities within Coleg Cambria. It has been beneficial to myself and others on my course to be able to go out and relate learning to the aircraft that are in the workshops or conduct practical sessions using the equipment available such as the 3D printers and hardness testers. I have especially enjoyed being able to have a taster session on using traditional manufacturing machines, such as lathes, as this gave me a much greater appreciation of the skill of machine operators and some of the benefits of modern, computer controlled machinery.

“Whilst studying at Coleg Cambria, I have often needed from a variety of the members of staff. Regardless of whether I have needed academic support or more pastoral support, all of the staff have listened and been open with me to find a solution. I am particularly grateful that all the staff I have worked with are approachable and understanding of issues outside of the college, which have often caused issues with my learning.”

# FdSc FORESTRY AND WOODLAND MANAGEMENT (Subject to Validation)

COURSE CODE: LP01466



## LENGTH:

2 years, full time

Students on this course will be required to undertake periods of self study, additional to taught hours.

## ENTRY REQUIREMENTS:

Either:

- Relevant Level 3 land based qualification, such as Forestry and Arboriculture, Agriculture, Agricultural Engineering or Horticulture grade DMM.
- 3 A Levels (including at least one science subject at a minimum grade C/4)
- 80-112 UCAS points
- GCSE in English or Welsh, and Maths, and one Science subject, all at a minimum grade C/4
- Skills Challenge Certificate is accepted
- International Baccalaureate, including H5 in a Science
- Access to HE: Science/Environmental based

Candidates with significant relevant industrial experience will also be considered on individual merit, but ideally should have: GCSE in English or Welsh, Maths, and one Science subject, all at a minimum grade C/4

Alternative qualifications may be considered on an individual basis, so if unsure please get in touch.

**LOCATION:** Llysfasi

## MODULES:

### Year 1:

- Study Skills
- Silviculture
- Woodland Ecology & Ecosystems
- Tree Biology, Pests & Diseases
- Timber Harvesting & Utilisation
- Forest & Environmental Legislation

### Year 2:

- Tree & Woodland Management
- Arboriculture & Urban Forestry
- Planning, Mensuration & Surveying
- Principles of Contracting
- Business Management
- Research Project

## WHAT WILL I STUDY?

The Tilhill FdSc in Forestry and Woodland Management is a unique course designed in partnership between Cambria University Centre and Tilhill, and validated and awarded by Bangor University.

This industry led initiative is designed to provide a straightforward career path into forestry and woodland management, either with Tilhill or with other forestry organisations. Tilhill, are part of the BSW group of companies, and together form the largest integrated forestry, management, harvesting and processing group in the UK. As such, they provide unrivalled support, mentoring, networking links, practical work, employment opportunities, and experiences for our students to learn, develop, and to find their way in the modern and fast moving forest industry of the 21st century.

The course covers management of woodlands for multiple different benefits and purposes, covering a wide range of woodland types, in different situations, each with their own different challenges and opportunities, so it is not all about commercial forestry plantations, though this is an important area. Concern for the environment and climate change are at a historical high point, with government and non government organisations struggling to come to terms with these challenges. Growing trees and managing them properly are a key part of the solution, and as a result there is a rapidly growing demand for trained foresters both in the tree management, and also contracting sectors.





## HOW AM I ASSESSED?

A wide variety of assessment strategies will be used, including: essays, tests, presentations, reports, practical observations, exams and portfolios.

## WORK PLACEMENT

Students are required to complete a period of at least 300 hours of relevant industrial work experience, as part of the course.

## WHAT'S NEXT?

Graduates from the course would be well placed to apply for the Tilhill Graduate Programme as a Trainee Forest Manager, or to seek work as an Estate Forester, Assistant to a Forestry Consultant, or with a forestry contractor, for example. Alternatively, you may decide to upgrade to an honours degree, by joining a forestry program at Bangor University, usually for the final year.

## CAREER OPTIONS

There are a wide range of job opportunities in forestry and woodlands, with a very strong demand at present, which is only set to grow in the coming years, particularly as grants and funding increases in response to government initiatives.

**For detailed course information including start dates and costs, please visit [www.cambria.ac.uk](http://www.cambria.ac.uk)**









# FdSc SOUND ENGINEERING & MUSIC PRODUCTION

COURSE CODE: LP52303



## LENGTH:

2 years, full time

Students on this course will be required to undertake periods of self study, additional to taught hours.

## ENTRY REQUIREMENTS:

- 45 UCAS points
- Extended Diploma subjects/grades required: MMM if studied on its own or to the total of 88 UCAS points when combined with other qualifications
- GCSE Maths and English Language at C grade/grade 4 or above. Plus an interview or presentation of portfolio may be required
- Access to HE Diploma with at least 9 Distinctions and 36 Merits or any other combination that equates to 104 UCAS tariff points in a relevant subject
- Mature students with GCSE grade C or above in English Language and Maths or equivalent, but lacking traditional Level 3 qualifications will be considered on the basis of relevant experience and an appropriate portfolio of work

**LOCATION:** Deeside

## MODULES:

### Year 1

- Computer Audio Technology
- The Media Industry
- Spreadsheets and Data Presentation
- Audio Production Technology
- Practical Audio Production
- Sound Technology
- Radio and Podcasting

### Year 2

- Audio Recording
- Broadcast Standards
- The Media Entrepreneur
- Live Performance Operations
- Broadcast Studio Operations
- Sound for TV, Film and Games

## WHAT WILL I STUDY?

Behind every live or studio performance lies a fascinating array of modern audio technology. This course gives you an opportunity to learn about the theories and concepts which underpin the use of this equipment, enabling you to work independently, solving practical problems and identifying solutions which help performers, producers and directors get the best results.

You will have access to state-of-the-art sound technology as well as staff with extensive knowledge and experience. You will develop skills in media technology, electronics, computer applications and studio technology and be trained in all aspects of live or recorded entertainment. Combined with the practical hands-on experience you will get if you choose to do a work placement, this will give you a significant advantage when it comes to securing your first job.

It is important to note that while this course includes some elements related to artistic matters, it is not an arts-based course. Furthermore, students are expected to engage with other media production theories and techniques where audio plays only a part, albeit a significant one. Three strands (production; technology; management) run throughout the course, building knowledge at each level.

## HOW AM I ASSESSED?

Your knowledge and understanding will usually be assessed via a combination of examinations and coursework. However, certain subjects may be assessed by other means, such as through a portfolio of work or practical work.

## WHAT'S NEXT?

When you successfully complete the course, you may wish to progress to the BSc (Hons) Audio and Music Production at Liverpool John Moores University or directly into employment.

Students are eligible to progress to the final year of a BSc honours, and will be supported by college and university staff in making their decision.

**For detailed course information including start dates and costs, please visit [www.cambria.ac.uk](http://www.cambria.ac.uk)**

# FdSc SPORTS COACHING

COURSE CODE: LP01196



## LENGTH:

2 years, full time, awarded by LJMU

Students on this course will be required to undertake periods of self study and work placement additional to taught hours.

## ENTRY REQUIREMENTS:

Conventional candidates should normally be able to demonstrate one of the following qualifications:

- A minimum of 88 points at GCE A Level or equivalent
- An appropriate BTEC Diploma – Extended Diploma: MMP
- An appropriate Access to Higher Education course 'Diploma of Achievement'.

The College and University encourages wider access and participation in Higher Education and applications are encouraged from those who may not have the necessary points/qualifications. The Programme Leader will discuss the requirement of the course and assess prospective students for their suitability based on a combination of qualifications, experience and motivation.

Mature students (21 years of age or over) without evidence of the above qualifications but with appropriate experience, will be required to demonstrate enthusiasm and aptitude for higher level study.

A Disclosure and Barring Service (DBS) Enhanced Police Check is required by Coleg Cambria for this programme.

**LOCATION:** Deeside

## MODULES:

### Level 4

- Psychosocial Principles of Sport
- Learning in PE and Sports Contexts
- Professional Practice in Sports Coaching
- Research Methods and Study Skills
- Exercise Physiology
- Human Movement

### Level 5

- Sport and Society
- Learning in PE and Sports Contexts 2
- Professional Practice in Sports Coaching 2
- Effective Coaching in Paralympic and Disability Sport
- Strength and Conditioning for Coaches
- Research Methods 2

## WHAT WILL I STUDY?

The FdSc in Sports Coaching provides a combination of both academic and practical experiences aimed at preparing you for employment or the opportunity to progress on to a top-up year with Liverpool John Moores University. You will get the opportunity to cover a range of relevant topics linked to coaching in a variety of sports.

## HOW AM I ASSESSED?

You will be taught through a variety of active and engaging sessions, including lectures, tutorials and practical workshops. There will also be visiting speakers and opportunities to visit relevant organisations.

Most modules will be assessed through essays and examinations, but there will also be practical work, individual and group presentations, portfolios and reflective logs. You will be given a full assessment schedule at the start of each academic year to help you plan your workload.

## WORK PLACEMENT

This programme contains an essential work placement component. If you are not already in employment, we will support you to find a suitable work placement.

## WHAT'S NEXT?

Students who successfully complete the FdSc can apply to do a top-up year at Liverpool John Moores University to gain a BSc in Sports Coaching.

## CAREER OPTIONS

- PE Teacher (\*further study required)
- Sports Coach
- Sports Development Officer
- MSc Postgraduate Studies (following completion of BSc in Sports Coaching at LJMU)

**For detailed course information including start dates and costs, please visit [www.cambria.ac.uk](http://www.cambria.ac.uk)**





# JORDAN BROOM

**Course:** FdSc Sports Coaching

“I decided to study the foundation degree due to the fact that I had completed my Level 3 BTEC in Sport with Cambria. I knew that the facilities and staff were going to be good and I had built a good relationship with lecturers.”

“I found the content of the course was relevant and up to date. One of the best things about the course was the amount of 1:1 teaching and support that was available throughout my time at Cambria. Studying gave me greater understanding of coaching and helped me explore areas of coaching that I perhaps would never have considered if it wasn't for the course.

“The support received was brilliant. The tutors were easily accessible and were always there to support you in whatever was needed. Whether that was to do with course timetables, coursework or even just life in general. Nothing was ever too much of an issue for them, they were happy to help.”

# FdSc / BSc APPLIED BUSINESS MANAGEMENT

FdSc COURSE CODE: LP00989 | BSc COURSE CODE: LP01249



Swansea University  
Prifysgol Abertawe

## LENGTH:

2 years, part time, day release (FdSc) with the option of an additional 1 year top up to BSc.

Students on this course will be required to undertake periods of self study, additional to taught hours.

2 years, full time, day release Foundation Degree (FdSc). This course uses asynchronous learning (which entails sessions held live and other sessions pre-recorded for students to learn in their own time).

## ENTRY REQUIREMENTS:

- Predicted grades of 3 A Levels grade B or above. We do not require A Levels in Business, Economics, Maths or Accounting/ Finance. We do not however consider General Studies as an A Level subject for offer purposes.
- Predicted (or achieved) IB of 32-33 or higher.
- The Skills Challenge Certificate will be accepted as part of the application criteria.
- BTEC (18 units) grades of DDM or equivalent.
- Access to HE Diploma - Business.
- All applicants must have GCSE English Language and GCSE Maths or Numeracy at grade C or above.
- Non-native English speakers must achieve 6.0 overall with no component less than 5.5 in IELTS or equivalent tests.
- Any assessment of prior learning (such as professional development awards or employment-based awards) which is at a Higher Education level but not awarded HE credits will be considered on a case by case basis by the Swansea University Admissions Team.

**LOCATION:** Northop Business School

## MODULES:

### Year 1:

- Marketing
- Human Resource Management
- Finance, Accounting and Analytics
- Operations Management 1

### Year 2:

- Leadership and International Human Resource Management
- Operations Management 2
- Business Management 1
- Organisational Project 1

Prince2 Foundation is offered as an optional extra on year 2 of the Foundation Degree, this project management qualification is a valuable asset to employers.

### Year 3:

- Business Management 2
- Leadership
- Organisational Project 2 (double module)
- Business Management 2 (Innovation)

## WHAT WILL I STUDY?

In choosing Cambria's FdSc/BSc in Applied Business Management (developed and accredited by Swansea University) you will study a broad spectrum of business and management topics (such as marketing, operations management, finance, accounting, strategy and human resource management). This programme is designed for the student who wants to excel and reach the top level of global business management practice.

Key features to studying this degree at Cambria:

- All modules are taught by our leading business tutors who have a breadth of industrial and academic knowledge and regularly train business leaders from across Wales.
- Outstanding connections with many businesses and business leaders throughout North Wales, with guest business speakers, presentations and opportunities to network.
- Experienced provider of apprenticeship routes, including business management.
- Personal Tutor and one to one support.
- World-class facilities with outstanding technology.



## HOW AM I ASSESSED?

The course material will be delivered through a combination of lectures, seminars, interactive tutorials, visiting speakers and workshops. The modules are assessed through a variety of different ways including self-reflective reports with an accompanying portfolio of evidence, examinations, projects, and presentations. Where possible, assessments are marked electronically and you will be given feedback and pointers for improvement for every assessment. Student support is available from your own Academic Mentor and the module tutors throughout your studies.

## WORK PLACEMENT

This programme is aimed at those in suitable employment for approximately 30 hours per week from the start of the programme.

## WHAT'S NEXT?

Successful completion of all modules in Years 1 and 2 will enable students to achieve a FdSc. Completion of the FdSc will allow progression onto the third year of the BSc Applied Business Management course at Cambria.

Students successfully completing the Applied Business Management degree have enhanced their employability in the business world. As a Graduate you will be able to demonstrate comprehensive understanding of the full spectrum of business operations in the real world and confidently evaluate courses of action that add the most value to an organisation.

## CAREER OPTIONS

Opportunities for careers include:

- Accountancy
- Marketing
- Human Resources
- Logistics
- Business Development
- Sales

**For detailed course information including start dates and costs, please visit [www.cambria.ac.uk](http://www.cambria.ac.uk)**



# RYAN DUFFY

**Course:** BSc Applied Business Management

**Employer:** Airbus

**Role:** Calibration & Maintenance Integrator in the Plant Production Support Function

“Cambria University Centre offers a unique experience. You are able to really connect with your lecturers which helps not only your personal development by learning from their wealth of experience, but also academically by having a vast amount of time invested into you.

“The facilities were outstanding which provided a safe and inspiring learning environment. I also enjoyed the fact that the lecturers at Cambria University Centre all came from different professional backgrounds so they provided us with a wide range of real life scenarios to support the applied element of the degree.

“My advice to someone deciding whether to study at Cambria would be to never be afraid to step out of your comfort zone. Cambria strives to do its best for you and give you the platform to succeed.”

# HNC CONSTRUCTION AND THE BUILT ENVIRONMENT (CIVIL ENGINEERING)

Can be studied as a Higher Apprenticeship COURSE CODE: LP01242



## LENGTH:

2 years - part time, day release

Students on this course will be required to undertake periods of self study, additional to taught hours.

## ENTRY REQUIREMENTS:

Applicants need to possess at least one of the following:

- BTEC Level 3 Diploma/Certificate in Construction or Civil Engineering
- Extended Diploma in Construction or Civil Engineering
- Edexcel Advanced VCE (e.g. in Construction and the Built Environment)
- City & Guilds FTC 6000
- Advanced Diploma/Certificate in Construction
- Or at least one A Level pass, with appropriate supporting passes at GCSE grades in at least four subjects including Mathematics, a Science subject and a subject requiring the use of written English.
- Suitable experience may be accepted instead of formal qualifications subject to interview.

The entry requirements are given as general guidance to the level of offer made. If you are unsure whether you meet the entry requirements, then please contact us.

**LOCATION:** Bersham Road

## MODULES:

- Unit 1** - Individual Project
- Unit 2** - Construction Technology
- Unit 3** - Science and Materials
- Unit 4** - Construction Practice and Management
- Unit 6** - Construction Information (Drawing, Detailing, Specification)
- Unit 7** - Surveying, Measuring and Setting Out
- Unit 8** - Mathematics for Construction
- Unit 20** - Principles of Structural Design

## WHAT WILL I STUDY?

The HNC in Construction and the Built Environment (Civil Engineering) is offered at Cambria through a collaborative agreement with Pearson. The programme comprises of two years part-time, day-release study and requires the completion of ten vocationally-specific modules.

The aim of the programme is to prepare students for a range of higher technical, professional and managerial careers in civil engineering by providing specialised studies which are relevant to those vocations and professions within which students are employed or are seeking employment.

The programme has been structured so that students are able to develop a range of skills and techniques, personal qualities and attitudes essential for successful performance in their working life.

Teaching is by formal lectures, supported by laboratory work, materials testing, surveying fieldwork, field trips, site visits, drawing and design work.

## HOW AM I ASSESSED?

Assessment is undertaken through written submission, time-controlled examination and practical activities.

## WHAT'S NEXT?

- BSc Civil Engineering Studies
- BSc (Hons) Construction Management
- BSc (Hons) Real Estate Management

## CAREER OPTIONS

The HNC in Civil Engineering provides students with a higher technical qualification which will be appropriate in pursuing career ambitions in the following sectors of the civil engineering industry:

- Civil Engineering
  - Structural Engineering
  - Highway Engineering
  - Railway Engineering
  - Public Health Engineering
- and many more.

**For detailed course information including start dates and costs, please visit [www.cambria.ac.uk](http://www.cambria.ac.uk)**





# JON WHITESIDE

**Current Student**

“On starting my current role within Kingspan, I was given the opportunity to obtain a qualification to help further my career.

“During my time here, I have found both staff and students very helpful. The support is there for those that need it, it is constantly offered and tutors are readily available to help at all times. The ease of getting to the site is also a bonus.”

# HNC CONSTRUCTION AND THE BUILT ENVIRONMENT (CONSTRUCTION)

Can be studied as a Higher Apprenticeship COURSE CODE: LP01241



## LENGTH:

2 years - part time, day release

Students on this course will be required to undertake periods of self study, additional to taught hours.

## ENTRY REQUIREMENTS:

Applicants need to possess at least one of the following:

- BTEC Level 3 Diploma/Certificate in Construction or Civil Engineering
- Extended Diploma in Construction or Civil Engineering
- Edexcel Advanced VCE (e.g. in Construction and the Built Environment)
- City & Guilds FTC 6000
- Advanced Diploma/Certificate in Construction
- Or at least one A Level pass, with appropriate supporting passes at GCSE grades in at least four subjects including Mathematics, a Science subject and a subject requiring the use of written English.
- Suitable experience may be accepted instead of formal qualifications subject to interview.

The entry requirements are given as general guidance to the level of offer made. If you are unsure whether you meet the entry requirements, then please contact us.

**LOCATION:** Bersham Road

## MODULES:

- Unit 1** - Individual Project
- Unit 2** - Construction Technology
- Unit 3** - Science and Materials
- Unit 4** - Construction Practice and Management
- Unit 5** - Legal and Statutory Responsibilities in Construction
- Unit 6** - Construction Information (Drawing, Detailing, Specification)
- Unit 7** - Surveying, Measuring and Setting Out
- Unit 21** - Site Supervision and Operations

## WHAT WILL I STUDY?

The HNC in Construction and the Built Environment (Construction) is offered at Cambria through Pearson. The programme comprises of two years part-time, day-release study and requires the completion of eight vocationally-specific modules.

The aim of the programme is to prepare students for a range of higher technical, professional and managerial careers in building studies by providing specialised studies which are relevant to those vocations and professions within which students are employed or are seeking employment.

The programme has been structured so that students are able to develop a range of skills and techniques, personal qualities and attitudes essential for successful performance in their working life.

Teaching is by formal lecture, supported by laboratory work, materials testing, surveying fieldwork, field trips, site visits, drawing and design work.

## HOW AM I ASSESSED?

Assessment is undertaken through written submission, time-controlled examination and practical activities.

## WHAT'S NEXT?

- BSc (Hons) Construction Management
- BSc (Hons) Real Estate Management
- BSc (Hons) Architectural Design Technology

## CAREER OPTIONS

The HNC in Building Studies provides students with a higher technical qualification which will be appropriate in pursuing career ambitions in the following sectors of the construction industry:

- Construction Management
  - Architectural Technology
  - Quantity Surveying
  - Building Surveying
  - Land Surveying
- and many more.

**For detailed course information including start dates and costs, please visit [www.cambria.ac.uk](http://www.cambria.ac.uk)**





# CARLA JOYNER

**Course:** HNC in Construction & the Built Environment - Construction

**Employer:** Coastal Construction & Renovation Services Ltd

**Role:** Director

“This course covers so many areas within the construction and civil engineering industry. The learning on this course has been relevant and interesting. I have been able to implement lots of new processes into our business on the back of what I learnt.

“The support from the tutors is exceptional, I was very concerned that I would struggle after being out of education for nearly 20 years. The tutors gave me the support and reassurance I needed throughout and gave me encouragement which has enabled me to progress successfully.

“This qualification is a brilliant stepping stone to obtaining a degree in your desired specialist subject. I started this course thinking I wanted to be a Quantity Surveyor. I then came to the end of the course wanting to be a Construction Manager. This course will most certainly help me achieve my career ambitions”.

# HNC ELECTRICAL AND ELECTRONIC TECHNOLOGY

Can be studied as a Higher Apprenticeship COURSE CODE: LP51313



PRIFYSGOL  
**Glyndŵr**  
Wrecsam

**Wrexham**  
**glyndŵr**  
UNIVERSITY

## LENGTH:

2 years - part time, day release

Students on this course will be required to undertake periods of self study, additional to taught hours.

## ENTRY REQUIREMENTS:

- Edexcel BTEC (Level 3) Diploma or Certificate or one A Level in Mathematics or a relevant science subject plus one other.
- Suitable experience may be accepted instead of formal qualifications subject to interview.

The entry requirements are given as general guidance to the level of offer made. If you are unsure whether you meet the entry requirements, then please contact us.

**LOCATION:** Deeside

## MODULES:

**Level 4** (20 credits - 60 taught hours /140 hours private study)

- Business & Management Techniques
- Programmable Logic Controllers
- Engineering Mathematics
- Electrical Engineering Science
- Instrumentation & Control Principles

**Level 4** (10 credits - 30 taught hours / 70 hours private study)

- Engineering Design
- Electronics 'A'

**Level 5** (20 credits - 30 taught hours / 170 hours work-based)

- Project (Industrial based)
- Electrical & Electronic Principles (10 credits)

## WHAT WILL I STUDY?

The HNC in Electrical and Electronic Technology is offered at Cambria through a collaborative agreement with Wrexham Glyndŵr University. It comprises of two years part-time study with day release and requires the completion of vocationally specific modules.

The aim of the programme is to prepare students for a range of higher technical, professional and managerial careers in engineering by providing specialised studies which are relevant to those vocations and professions within which students are employed.

HNCs are benchmark qualifications for Engineering Technicians, recognised by industry and essential for certain positions in HM Forces. Our HNC courses introduce you to the fundamentals of electrical engineering science, the business and management skills you'll need to succeed and provide you with an opportunity to hone your maths & IT skills.

## HOW AM I ASSESSED?

Assessment is undertaken through written submission, time-controlled examinations and practical activities. All are subject to Glyndŵr University assessment procedures.

## WHAT'S NEXT?

Upon completion learners could progress onto further Higher Education courses such as Foundation Industrial Engineering (FdEng) and BEng (Hons) degree.

**For detailed course information including start dates and costs, please visit [www.cambria.ac.uk](http://www.cambria.ac.uk)**





# JONATHAN HARRIS

**Course:** HNC Electrical and Electronic Technology

**Employer:** Convatec

**Role:** Reliability Engineer

“I had previously studied at Cambria, and found the college to be helpful and supportive. So when I had the opportunity to further my qualifications, I immediately thought of Cambria University Centre.

“The course was insightful, and really enhanced my understanding of electrical engineering and gave me confidence in writing technical documents.

“It has helped me to be able to perform tasks in my role to a high standard and given me underpinning knowledge of control systems.”

# HNC MECHANICAL TECHNOLOGY

Can be studied as a Higher Apprenticeship COURSE CODE: LP00635



PRIFYSGOL  
**Glyndŵr**  
Wrecsam

**Wrexham**  
**glyndŵr**  
UNIVERSITY

## LENGTH:

2 years - part time, day release

Students on this course will be required to undertake periods of self study, additional to taught hours.

## ENTRY REQUIREMENTS:

- Edexcel BTEC (Level 3) Diploma or Certificate or one A Level in Mathematics or a relevant science subject plus one other.
- Suitable experience may be accepted instead of formal qualifications subject to interview.
- The entry requirements are given as general guidance to the level of offer made. If you are unsure whether you meet the entry requirements, then please contact us.

**LOCATION:** Deeside

## MODULES:

- Business & Management Techniques
- Engineering Mathematics
- Mechanical Science
- Engineering Design
- Engineering Materials
- Engineering Computer Applications
- Project (Industrial based)
- Mechanical Principles
- CAD/CAM

## WHAT WILL I STUDY?

The HNC in Mechanical Technology is offered at Cambria through a collaborative agreement with Wrexham Glyndŵr University. It comprises of a two year part-time study with day release and requires the completion of vocationally-specific modules.

The aim of the programme is to prepare students for a range of higher technical, professional and managerial careers in engineering by providing specialised studies which are relevant to those vocations and professions within which students are employed.

HNCs are benchmark qualifications for Engineering Technicians, recognised by industry and essential for certain positions in HM Forces. Our HNC course introduces you to the fundamentals of mechanical engineering science, business and management skills you will need to succeed and provide you with an opportunity to hone your maths & IT skills.

## HOW AM I ASSESSED?

Assessment is undertaken through written submission, time-controlled examinations and practical activities. All are subject to Wrexham Glyndwr University assessment procedures.

## WHAT'S NEXT?

Upon completion learners could progress onto further Higher Education courses such as Foundation Industrial Engineering (FdEng) and BEng (Hons) degree.

**For detailed course information including start dates and costs, please visit [www.cambria.ac.uk](http://www.cambria.ac.uk)**





# ETHAN DAVIES

**Course:** Mechanical  
Technology – HNC

**Employer:** Electroimpact UK Ltd

**Role:** Manufacturing Lead

“My time at Cambria University Centre was great. I found the qualification to be well-rounded and it provided me with key skills I can apply to my job and the industry. The skills and knowledge I gained are vital for a career in an engineering environment.”

# HNC/HND ANIMAL MANAGEMENT

HNC COURSE CODE: LP50200 | HND COURSE CODE: LP51284



## LENGTH:

HND- 2 years full time/ 4 years part time

HNC - 1 year full time/ 2 years part time

Students on this course will be required to undertake periods of self study, additional to taught hours.

## ENTRY REQUIREMENTS:

- Level 3 qualification (minimum 120 credits / 720 GLH) in Animal Management or a related subject with a Merit profile - minimum of 64 UCAS tariff points
- A Level grades of DDE - minimum of 64 UCAS tariff points
- International equivalent of the above
- For learners who have not recently been in education, applications will be considered on a case by case basis, but may include one of the following:
  - Access to Higher Education Certificate awarded by an approved Further Education institution in a relevant area.
  - Related work experience.
  - Applicants should typically have A\* to C grade and/or 9 to 4 in GCSE English/Welsh and Maths/Numeracy.

**LOCATION:** Northop

## MODULES:

### Year 1:

- Animal Health and Welfare
- Business and the Business Environment
- Managing a Successful Project
- Animal Behaviour in Society
- Animal Anatomy and Physiology
- Ecological Principles
- Animal Husbandry
- Teaching in a Specialist Subject

### Year 2:

- Biological Principles
- Research Project
- Anthrozoology
- Animal Breeding and Genetics
- Wildlife Conservation
- Ethics and Consultation
- Work Experience

In addition to taught units students also have dedicated tutorial and practical time to further support their studies.

## WHAT WILL I STUDY?

Graduates who successfully complete this course will obtain a varied skill set well suited for the broad range of opportunities within the animal industry. In a highly competitive sector, Cambria's students will be equipped to enter the work sector with a range of transferable and practical industry based skills including managing animal collections, delivering teaching instruction and implementing behaviour modification plans.

## HOW AM I ASSESSED?

Assessment will be through a combination of assessment methods including controlled assessments, assignments, practicals, presentations, case studies, projects and peer observations. Assignments will be marked electronically and you will be given feedback and pointers for improvement for every assessment.

## WORK PLACEMENT

The HND programme contains an essential work placement component in the second year. If you are not already in employment, the college will support you to find a work placement.

## WHAT'S NEXT?

Students who successfully complete the HND in Animal Management will have the necessary qualifications to pursue further study.

## CAREER OPTIONS

Opportunities for careers include:

- Animal Keeper
- Animal Instructor or Lecturer
- Animal Trainer or Consultant
- Wildlife Technician
- Animal Rescue Centre Manager

**For detailed course information including start dates and costs, please visit [www.cambria.ac.uk](http://www.cambria.ac.uk)**





# MEL FROUDE

**Course:** HNC Animal Management

**Employer:** RSPCA

**Role:** Animal Rescue Officer

“I was considering a change of career to work with animals. After visiting the Northop site and meeting with the tutors, I felt that their passion and enthusiasm for the course really rubbed off on me.

“Having previously studied at university, I was pleasantly surprised by the smaller class sizes and support on offer. The support was amazing, from all staff to my peers. The lecturers and animal centre staff were always available to help and were great at providing the right amount of support without taking away from your independent learning.

“The course definitely gave me the confidence to go out and get a job in the industry, it provided me with a good base of knowledge that I can apply in my role.”

# TEACHING - PCET - PGCE/ PCE

## Post Compulsory Education and Training (PCET)



### LENGTH:

1 year, full time

Course code: Yale - LP01412 | Deeside - LP01414

2 years, part time

Course code: Yale - LP51315 | Deeside - LP51316

Students on this course will be required to undertake periods of self study, additional to taught hours.

### ENTRY REQUIREMENTS:

- Degree
- A Disclosure and Barring Service (DBS) Enhanced Police check is required for this course

**LOCATION:** Yale or Deeside

### MODULES:

You will study 6 of the following modules of 20 credits each.

- Effective Teaching for Effective Learning 1
- Effective Teaching for Effective Learning 2
- Specialist Subject Learning and Development
- Learning Literacies
- Equality, Diversity and Inclusive Learning
- Learning Digital Competencies
- Offender Learning (a requirement if you have a placement in HMP Berwyn) (Yale only)
- Bilingual Learning (Yale only)

You will also carry out teaching practice and professional development through a one day per week teaching placement, a minimum of 100 teaching hours.

If you complete the course over two years, you will study 3 modules per year.

### WHAT WILL I STUDY?

The programme framework outlines an attractive and innovative approach to teacher education and training that meets the current need for accredited teaching and training qualifications in the diverse post-compulsory sector.

The PGCE is aimed at those who have a degree in the subject they wish to teach.

This course is accredited through Aberystwyth University and leads to a Professional Graduate Certificate in Education.

### HOW AM I ASSESSED?

A range of assessment methods throughout the programme will include reports, reflective journals, observations, essays, presentations and a teaching folder.

There are no formal examinations on the PGCE.

### WORK PLACEMENT

This programme contains an essential work placement component. If you are not already in employment, we will support you to find a suitable work placement.

### WHAT'S NEXT?

Designed especially for those who want a nationally recognised qualification in order to teach students in Further Education, sixth form and tertiary colleges, prisons, adult education and work-based learning settings.

We will support you with finding a suitable placement within the College, community or through HMP Berwyn if you have an interest in Offender Learning.

**For detailed course information including start dates and costs, please visit [www.cambria.ac.uk](http://www.cambria.ac.uk)**





# JOE MAULT

**Course:** PGCE/PCET

**Employer:** Coleg Cambria

**Role:** Agricultural Lecturer

“My favourite thing about studying at Cambria University Centre was that the tutors were well informed and facilitated great discussions. This contributed massively towards my development. The tutors were also great at advising how to complete assignments and gave constructive feedback.

“The course has helped me in my role and has allowed me to engage in a range of teaching strategies such as stretching and challenging learners.”

# TEACHING - PCET - PGCE/ PCE

## Post Compulsory Education and Training (PCET)



### LENGTH:

1 year, full time

Course code: Yale - LP01412 | Deeside - LP01414

2 years, part time

Course code: Yale - LP51315 | Deeside - LP51316

Students on this course will be required to undertake periods of self study, additional to taught hours.

### ENTRY REQUIREMENTS:

- 5 years vocational experience and a Level 3 or above in a vocational discipline.
- A Disclosure and Barring Service (DBS) Enhanced Police check is required for this course.

**LOCATION:** Yale or Deeside

### MODULES:

You will study 6 of the following modules of 20 credits each.

- Effective Teaching for Effective Learning 1
- Effective Teaching for Effective Learning 2
- Specialist Subject Learning and Development
- Learning Literacies
- Equality, Diversity and Inclusive Learning
- Learning Digital Competencies
- Offender Learning (Yale only)
- Bilingual Learning (Yale only)

If you complete the course over two years, you will study 3 modules per year.

You will also carry out teaching practice and professional development through a one day per week teaching placement.

### WHAT WILL I STUDY?

The programme framework outlines an attractive and innovative approach to teacher education and training that meets the current need for accredited teaching and training qualifications in the diverse post-compulsory sector.

The PCE is aimed at those with vocational experience who do not hold a degree but hold Level 3 or above qualifications in their vocational discipline.

This course is accredited through Aberystwyth University and leads to a Professional Certificate in Education.

### HOW AM I ASSESSED?

A range of assessment methods throughout the programme will include reports, reflective journals, observations, essays, presentations and a minimum of 100 teaching hours.

There are no formal examinations on the PCE.

### WORK PLACEMENT

This programme contains an essential work placement component. If you are not already in employment, we will support you to find a suitable work placement.

### WHAT'S NEXT?

Designed especially for those who want a nationally recognised qualification in order to teach students in Further Education, sixth form and tertiary colleges, prisons, adult education and work-based learning settings.

We will support you with finding a suitable placement within the college, community or through HMP Berwyn if you have an interest in Offender Learning.

**For detailed course information including start dates and costs, please visit [www.cambria.ac.uk](http://www.cambria.ac.uk)**





# PAUL HUGHES

**Course:** PGCE/PCET  
(Two year-Part Time)

**Employer:** North Wales Police

**Role:** Police Custody Sergeant

“Prior to applying for the course, I spoke to a number of tutors to gauge what qualification I would need to eventually become a FE lecturer. I also spoke with the programme lead, and I was impressed by what the course involved.

“I really enjoyed being able to carry out my teaching hours at the college, with the Uniformed Public Services department. Additionally, I was impressed with the flexibility in attending lectures in person or remotely. This certainly helped with being in full time employment.

“The support I received during my course was excellent. The course allowed me to engage in academic writing, and has given me the confidence in researching subject matter. The opportunity to be given a teaching placement in order to fulfil my teaching portfolio hours was excellent. From completing this course, I believe I have become a more rounded educator, with a variety of new methods and theories learnt.”

# **OPEN** 2022/23 **EVENTS**



**Wednesday 9th November 2022**

5.30pm - 8.30pm

Deeside and Deeside Sixth

**Saturday 12th November 2022**

10am - 1pm

Llysfasi

**Wednesday 16th November 2022**

5.30pm - 8.30pm

Yale, Yale Sixth and Bersham Road

**Saturday 19th November 2022**

10am - 1pm

Northop

**Monday 23rd January 2023**

4pm - 7pm

Deeside

**Tuesday 24th January 2023**

4pm - 7pm

Yale and Bersham Road

**Wednesday 8th March 2023**

5.30pm - 7.30pm

Deeside and Deeside Sixth

**Saturday 11th March 2023**

10am - 12pm

Llysfasi

**Wednesday 15th March  
2023**

5.30pm - 7.30pm

Yale, Yale Sixth  
and Bersham Road

**Saturday 18th March 2023**

10am - 12pm

Northop